

# Ken Hewlett



**Ken Hewlett**  
*Senior Project Manager*

**B.A. Geology**  
Rice University, 1987

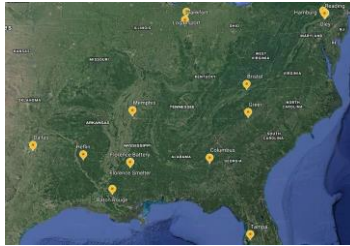
## Focused Experience

- Environmental Trustee
- Design and construction oversight
- Landfill operations
- In situ heating
- Operations cost optimization
- Client reserve assessment and planning
- Agency and vendor team building
- Seismic stability assessments procurement and management
- Emerging compounds investigation
- Brownfield redevelopment
- Media interaction
- Meeting facilitation
- Resource procurement
- Contracting Strategy
- Multiparty intra-group interaction, negotiation
- PCB site operations
- DNAPL treatment

## Skills

- Trustee Services
- Complex site project management
- Inter-agency and inter-client communications and facilitation
- Project controls management and analysis
- Consent Decree and other agency document negotiations
- Client representation
- Public relations
- Agency and contract negotiations
- Technical expert management and oversight
- Business operations

## Representative Major Projects



### Exide Environmental Response Trust

Trustee, responsible for a portfolio of 16 former battery manufacturing, recycling, and lead smelting facilities previously owned and operated by Exide Technologies, across 10 states, in EPA Regions 3, 4, 5, and 6. For each of these sites, on behalf of the Trust, Mr. Hewlett leads efforts to implement environmental actions, sell Trust assets including real and business personal property, communicate with regulators, fulfill Consent Decree obligations, and carry out administrative and property management functions. Mr. Hewlett manages a nationwide team of contractors and vendors on a wide variety of tasks, including design and implementation of corrective actions, demolition, operation of wastewater treatment and groundwater extraction and treatment systems, and landfill management. In his efforts to further the interests of the Trust, he has also met with and made presentations to local elected officials, state agency senior management including the PA DEP Secretary, and EPA regional senior managers, including the Regional Administrator for Region 3.



### Mississippi Phosphates Corporation Environmental Trust

Providing Trustee services for a CERCLA former phosphate fertilizer manufacturing site on the Bayou Casotte in Pascagoula, MS, and working closely with Trust beneficiaries at EPA Region 4, the US DOJ, and MDEQ. Duties included the sale of salvageable site assets, coordination of demolition of a sulfuric acid plant, and navigating complicated legal, administrative, and technical Trust obligations. Mr. Hewlett also developed an opportunity that resulted in a mooring agreement with a local barge company, providing substantial operating revenue to the Trust. He has been a negotiator and key participant in efforts to sell the property, working with the buyer as well as interacting, reporting, and negotiating with pre-petition lenders.



### Oil Superfund Site, Monterey Park, California

Project Coordinator, responsible for overseeing implementation of remedial activities, including pre-design, design, construction and operation of landfill gas extraction and destruction systems, and landfill cover, and extraction and treatment of landfill leachate. Responsible for monitoring progress of the work, assuring integration and coordination and facilitating communication among client, government, and other regulatory and public parties, as well as contractors and consultants. Managed public relations, including preparation of newsletters, public meetings, open houses and media interaction. Successfully avoided adverse publicity by conducting interviews with print, radio and television media for sensitive issues related to neighbors and a high profile local political crisis. Participated in development and negotiation of a Scope of Work for a Consent Decree for \$400,000,000 of remedial services and long-term operations.

# Ken Hewlett (continued)

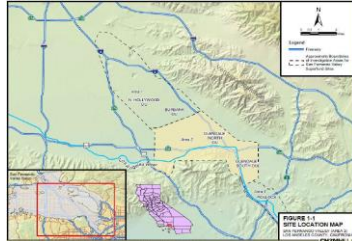


**Kenneth Hewlett, B.A.**  
*Senior Project Manager*



## **BKK Landfill, West Covina, California**

Providing technical and strategic expertise to Chevron, related to its PRP obligations at a large hazardous waste landfill site. Duties development of financial analyses, cost evaluation and forecasting for internal reserve requirements, participation in technical meetings with state agency personnel and consultants, participation on various PRP committees involved in project decision-making, document review and general technical support.



## **Glendale Chromium Operable Unit**

Project Coordinator for the Glendale Chromium Operable Unit, a multi-party project located in one of the San Fernando Valley Superfund Sites, and for which a Remedial Investigation of Hexavalent Chromium in groundwater and preparation of a Conceptual Site Model has been completed. Duties included technical work product oversight, liaison with EPA and local agencies, schedule and budget oversight and planning, contractor oversight and client reporting, and facilitating negotiations on various issues with EPA.



## **Sunrise Landfill**

Project Coordinator/Group Chair for closed landfill in Michigan. Duties include oversight of a local consultant in their performance of post-closure OM&M, budgeting and financial tracking including financial assurance funds, client reporting, and interaction with the state agency (EGLE).



## **Cal Compact Site**

Provided oversight and expertise on behalf of AIG. The site is a former hazardous waste landfill with complex issues related to remediation, redevelopment and the Clean-up Cost Cap Insurance Policy. Responsibilities include review of cost/scope at policy inception and evaluation of future costs/scope, assisting AIG understand its obligations under the policy, providing support to AIG in its efforts to identify and quantify potential cost separations, invoice review, and

general technical input in support of AIG's oversight of the project in its ongoing evaluation of the claim.



## **Gibson Environmental Site**

Project Manager for closeout of the Gibson Environmental Site, a former oil refinery and waste oil recycling facility. Site was a multi-party California RCRA site. Duties included contractor oversight, facilitation of client communications, agency reporting, financial tracking, and technical/administrative support to facilitate sale of the property and a Certificate of Completion from the State of California.

# Ken Hewlett (*continued*)



**Kenneth Hewlett, B.A.**  
*Senior Project Manager*

## Employment History

**2020 - Current**

**PathForward Consulting, Inc., *Senior Project Manager***

Environmental Trustee, Multi-party CERCLA site project management, client representation, environmental custodial trust management, and brownfield redevelopment

**2008 - 2020**

**de maximis, inc., *Project Manager***

Project management, project coordination, and client representation for multi-party CERCLA sites including landfills, regional groundwater basins, oil recycling facilities, and a former oil refinery. Served on the Board of Directors of O&M, Inc., a design/build/operate de maximis affiliate.

**2002 - 2008**

**KPK Holdings, Inc., *Founder and Partner***

Oversaw daily operations of a social networking and event planning business. Duties included revenue tracking and projections, acquisitions, personnel management, marketing.

**2000 - 2002**

**Consultant/Sole Practitioner**

Provided environmental expertise and client representation for multi-party landfill sites. Consulting services to landfill redevelopment client.

**1993 - 2000**

**New Cure, Inc., *Engineering Manager and Project Coordinator***

Engineering Manager and Project Coordinator for the Oil Landfill, overseeing implementation of cover, landfill gas, and stormwater erosion control remedies.

**1987 - 1992**

**Environmental Solutions, Inc., *Project Engineer/Geologist***

Project engineer, project geologist, field manager to industrial clients for mining, landfill, USTs, other environmentally impacted properties.